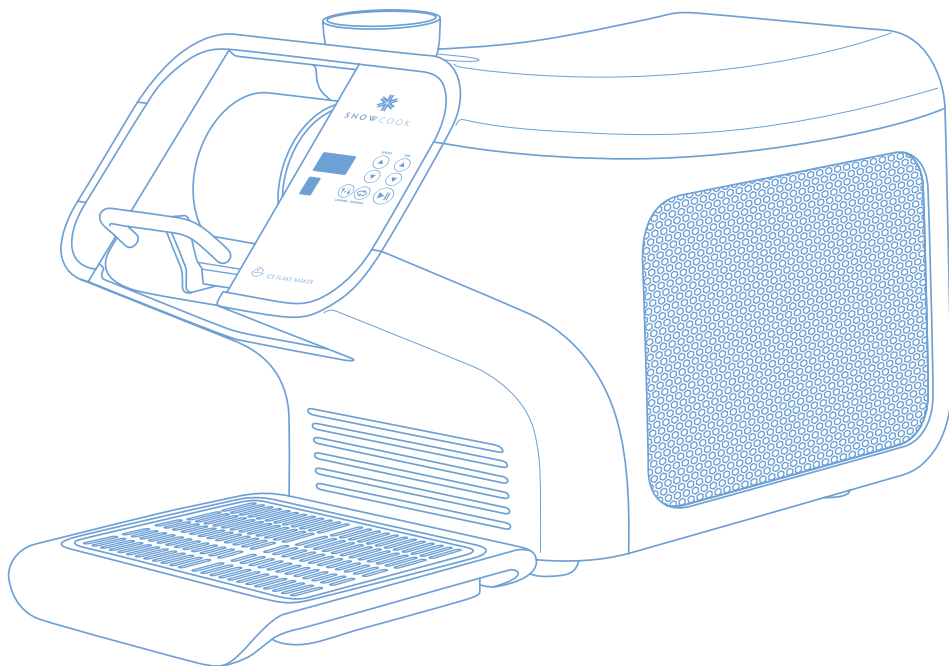


SN❄WCOOK



SNOWCOOK LA ,SA

Instruction Book

Snowflake-Ice machine

www.sanggodae.co.kr

- Before using, please read "Precautions for Safe Use" and use it accordingly.
- Please read this Instruction Book and store this book in a place that anyone can see at any time.
- This product is for (COUNTRY) use.
- It cannot be used outside of the country where the voltage is different.
- Performance and design can be changed without notice to improve the quality of this product.

Be sure to read the “Precautions for Safe Use” to make the product safer.



- This product is for (COUNTRY) use. It is not responsible for any trouble or injury caused by improper use or use not in accordance with the instruction book, and the product warranty does not apply.
- Children should not use, clean or maintain without supervision.
- Please use the product in the electrical outlet which is suitable for the product plug. It is possible to use the product with the same voltage in the region where you use it. Damage caused by improper use is not covered by the product warranty.
- If you want to extend the cord, be sure to use only the grounded cable.
- Keep away from pulling the power cable over a sharp edge, or from heat and damp.
- Please stop using the product and ask for A/S in the following cases.
 - When power cord is damaged.
 - When main power circuit breaker is down automatically
- In case you want installed product to move and re-install, please be sure to check that the product is in a horizontal position and that the drainage hose is properly positioned. (Product trouble caused by randomly moving and reinstalling products after completing product installation may not be repaired free of charge)
- Unplug the power cord when not in use for a long time, and remove any water or raw material drink residue left in the product.
- Never touch the power plug with wet hands.
- Please wear rubber gloves for the safety during product cleaning, please pay attention to the blade, and do not spray water outside the product.
- Do not disassemble or modify the product.
(We do not take any responsibility for troubles or accidents that occur during the modification.)
- Use only liquid that can be edible for the drink inlet, and do not use hot liquid over 25°C.

04

Product Features

05

Precautions for Safe Use

08

Installation Method

09

How to Use

10

Name of Parts & Specifications

12

Cleaning & Maintenance

14

Troubleshooting

15

Warranty

Product Features



There is no change in ice quality and performance even if it is operated for a long time.



Selectable ON/OFF, Continue, Cleaning, Speed and Time

- Able to control Production and Cleaning
- You can choose the ice quality by controlling the speed button



Easy to replace PET bottle for supplying raw material drink

- Convenient to manage raw material drink because you only need to install the PET bottle with drink when you need snow flake.
- Separately purchase PET bottle adapter for SNOWCOOK LA , SA



You can control the rotation speed of drum.

- By controlling the rotation speed of drum, it is possible to produce the best ice quality that consumers want for the type of raw material drink.



If you press the stop button while running, it stops right away so it is convenient to use.



Cleaning Function

- It is hygienic because it can easily clean the drum and the inside with clean water after ice production.

Precautions for Safe Use

Please be aware that the following instructions are for using the product safely and accurately to prevent unexpected risks or damages. Safety-related precautions are classified as follows, depending on the risk expected when misused, the magnitude of damage, and the degree of urgency of the occurrence of risk.



This symbol is to call attention to matters that may cause danger.



This symbol indicates a prohibition mark that should not be allowed.

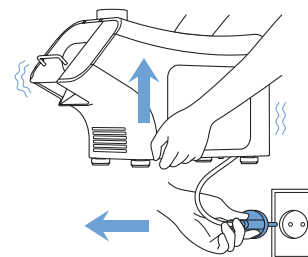


This symbol indicates what must be followed.



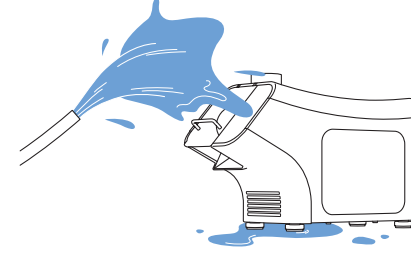
Do not unplug or move the power while running.

※ This causes product troubles and fire.



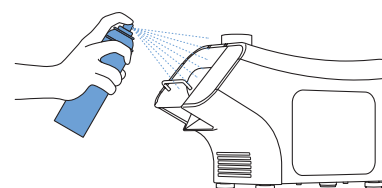
Do not spray water directly on the product.

※ This causes product troubles and electric shock.



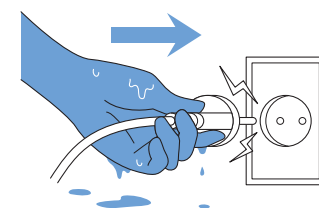
Do not spray insecticide or flammable spray on the product.

※ This is not only harmful to the human body but can also cause product troubles or fire.



Do not plug or touch the power with wet hands.

※ This causes an electric shock.



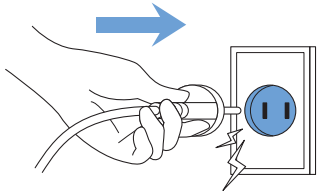


WARNING

Serious injury or death may occur if instructions are violated.

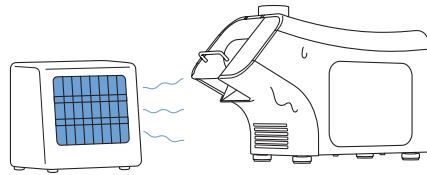


Be sure to plug it into a dedicated 220V outlet.



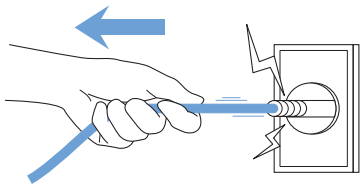
Do not keep it close to the heater.

※ This causes deformation, discoloration, and fire.



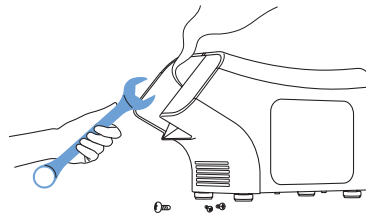
Do not pull the power cord part.

※ This causes an electric shock or fire.



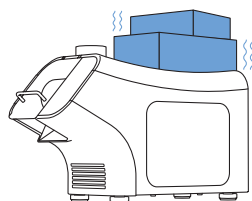
Never break, repair, or modify arbitrarily.

※ Contact the manufacturer or the salesperson when you need repair because there is a risk of troubles, electric shock, or fire.



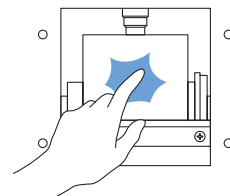
Do not go on top of the product, and do not put on or stack heavy items on the product.

※ This causes trouble or deformation.



When running, keep your hands or rubber gloves from contacting the inside of products such as drum and blade.

※ This causes injury.



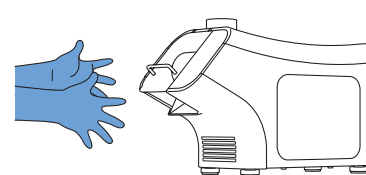
CAUTION

Minor injury or product damage may occur, if instructions are violated.



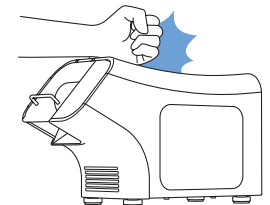
Do not let children touch the product.

※ There is a risk of electric shock or injury.



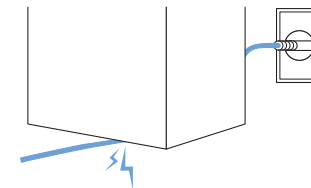
Do not give a serious shock to the product.

※ It causes troubles.



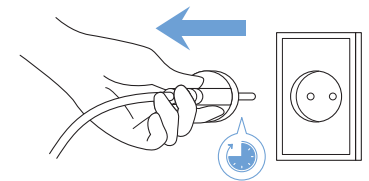
Do not bend the power cord too hard, and make sure the power cord is not damaged by being pressed by heavy objects.

※ This causes the fire. If the power cord is damaged, please contact the A/S Center instead of randomly repairing it.



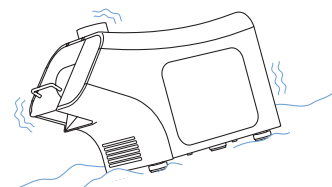
Please unplug the power when not in use for a long time.

※ If you do not unplug the power cord, the short circuit caused the fire due to deterioration of insulation.



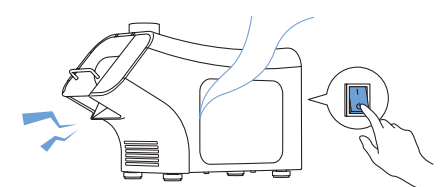
Do not use in narrow spaces, sloped, or bumpy floors. Please install after checking if it is horizontal.

※ This causes troubles and deformation.



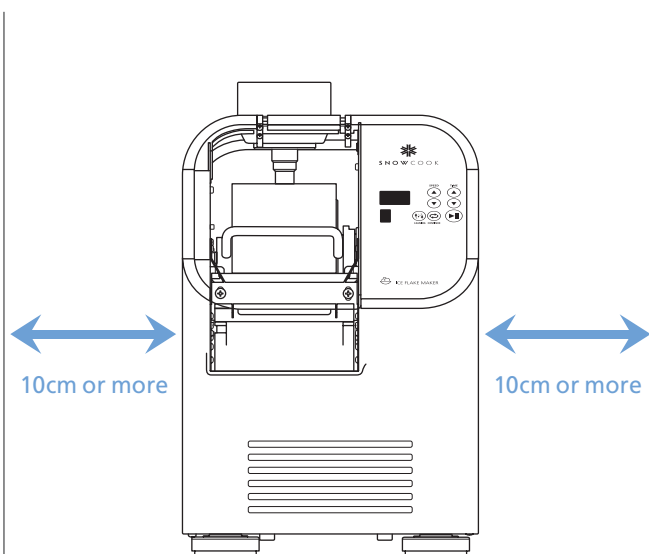
If the product has strange sounds, smells, or smoke, please turn off the main power immediately and contact the salesperson or manufacturer.

※ This causes electric shock and fire.



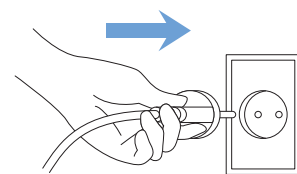
Installation Method

- When moving the main unit or when not in use for a long time, unplug the power plug and drain the water.
- Please install the product on a flat floor. In places where it slopes, vibration can occur in the product.
- Verify that the power cord is not damaged, and that the voltage is 220V, 60Hz, then plug in the power cord. (Prevent electric shock accidents)
- Use an electrical outlet with a capacity of 20A or higher.
- Be sure to connect the cord to the electrical outlet with the ground terminal.
- Do not use multiple machines in one electrical outlet, and do not use an extension cord.
- Please always install the product more than 20cm away from the wall so that it does not interfere with the ventilation of the product.



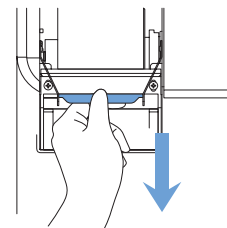
The main unit is installed on a strong and horizontal floor.

How to Use



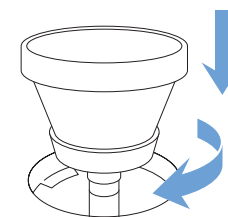
01

Plug the power cord into the grounded 220V electrical outlet.



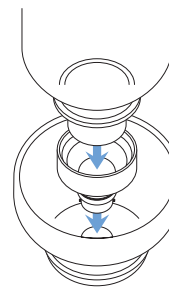
02

Insert and fix the tray.



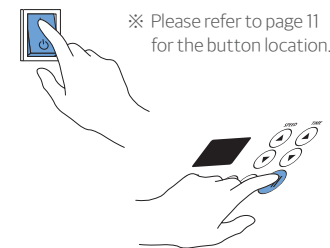
03

After inserting the H-Adapter Cover, turn clockwise and fix it.



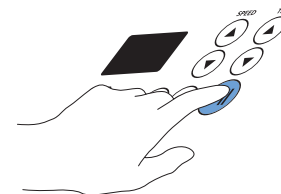
04

Put in a PET bottle and P-Adapter Cover.



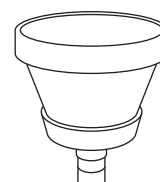
05

Ice is produced by pressing the Main Power button on the back and the Start button on the front.

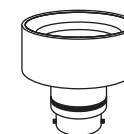


06

Press the STOP button on the front and the machine stops. Also, Ice production automatically stops after set time.

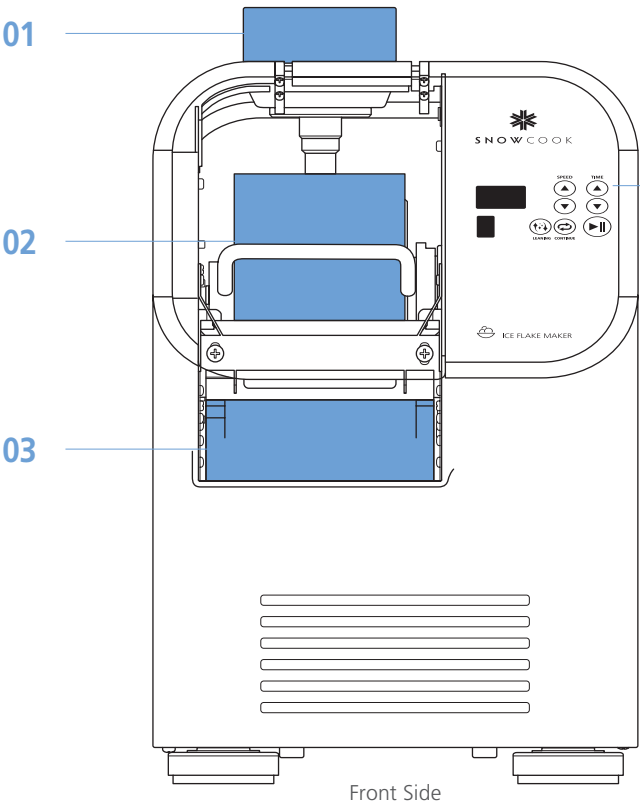


H-Adapter Cover



P-Adapter Cover

Name of Parts and Specifications



01
H-ADAPTER COVER

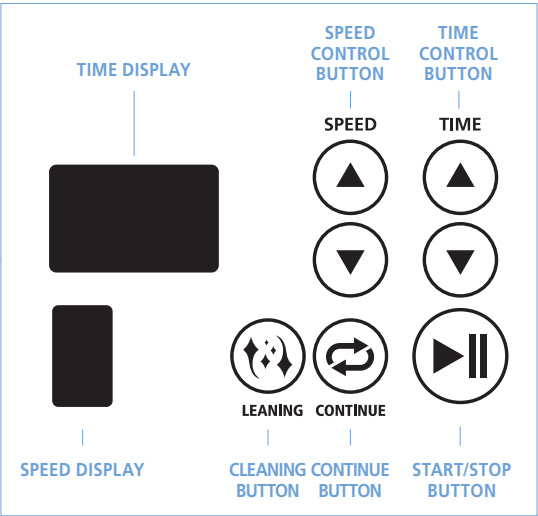
This is the part where you put in raw material drink equipped with P-Adapter Cover and PET Bottle. And it can be separated when cleaning.

02
DRUM

This is where the ice is produced, and when the Start or Cleaning buttons are turned on, it is rotated. And when Start or Cleaning buttons are turned off, it stops.

03
TRAY

This part is attached and detached during cleaning. When using ice production, install this part.

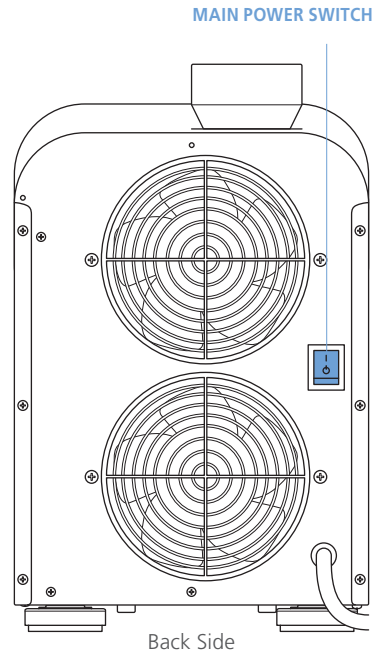
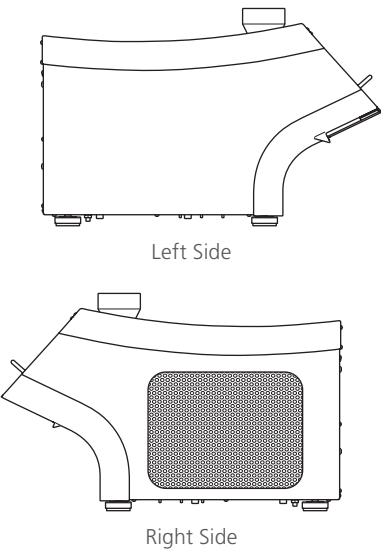


SPEED : You can set the speed of ice-making from 1 (lowest speed) to 8 (highest speed). Though ice can be made quickly at high speed, but sets the speed according to the type of raw material drink.

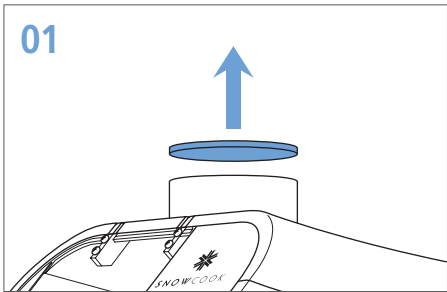
TIME : Sets the auto-stop time after ice-making.
e.g.) If displayed as 120SEC initially, make ice for 120 seconds and stop.

CONTINUE : Press the CONTINUE button to continue making ice for 30 minutes.

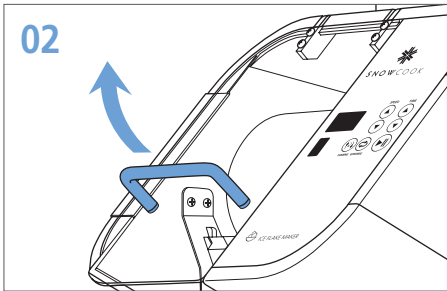
Product Name	Snowflake-Ice machine
Model	SNOWCOOK LA , SA
Power	AC220V60Hz
Power Consumption	0.8Kw
Current	3.4A
Refrigerant	R404A
Size	325mm*340mm*480mm
Weight	28.5KG
Ice-making Amount	165Kg/day
Cooling Type	W for Water-cooling or A for Air-cooling



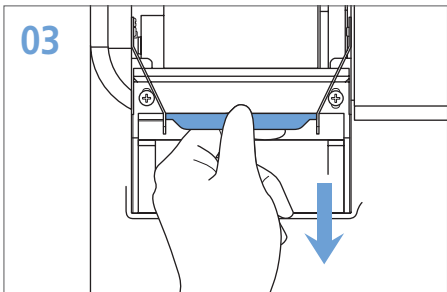
Cleaning and Maintenance



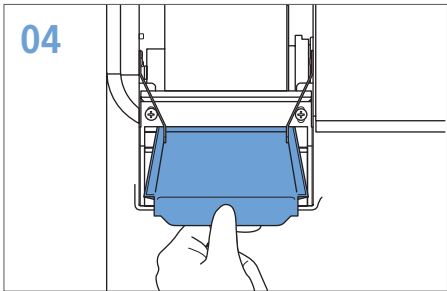
Pull out the H-Adapter Cover and P-Adapter Cover on the top of the product.



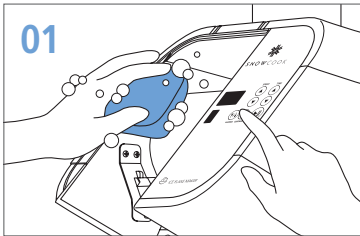
Open a plastic window.



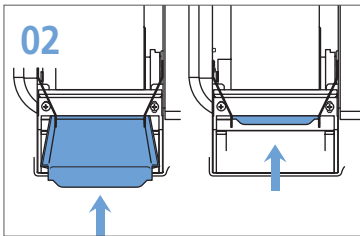
Grab the front of tray and lift there slightly.



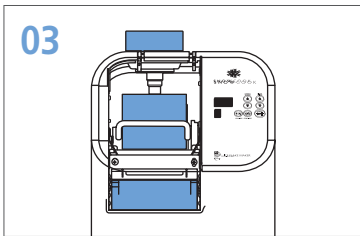
If you pull the tray towards you while being careful not to get caught by main unit, the tray will be removed.



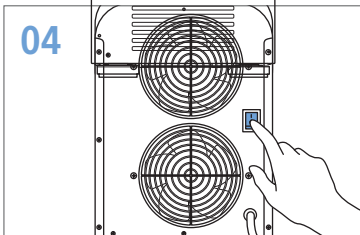
Press the cleaning button and clean using detergent, brush, scourer, etc. After cleaning, open the plastic window for natural drying.



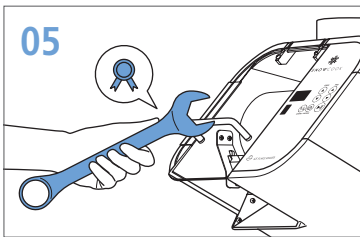
Assemble Tray in reverse order of disassembly of tray. (Grab the front of tray and slide it into the main unit. Reverse sequence of number 03 and number 04 on page 12.)



The main unit of the ice production should be cleaned daily. If you clean the main unit, using neutral detergent and finish with steam and sterilization disinfection. When the product stops operating, turn off the power button and the power circuit breaker, remove the ice from the drum, tray, etc., and keep the dry condition. Keep it clean and dry all the time, so that bacteria, fungi, viruses, etc. cannot inhabit.



If the product is not used for a long time, switch off the power circuit breaker and block the main water supply.



The repair and maintenance of the product shall be carried out by the person who has received the maintenance training with the permitted parts. Even during the warranty period, **consumers will be responsible for legal liability and repair costs for any problems** caused by a person who is not familiar with how to use of the product, even if the product is operated or repaired at will.

Troubleshooting

Please check the below information before requesting repair of the trouble and if there is any problem, contact the Sales Agent or Manufacturer.

Symptom	Check	Action
Doesn't it work?	Did you check the main power switch on the back?	Please check if the main power switch on the back is turned on.
	Is the power cord well plugged into the electrical outlet?	Plug in the power cord and run the product.
	Isn't the electrical outlet defective?	Try a different electrical outlet.
	Isn't it a blackout?	Please try running again after checking if the electricity is on
No ice is produced?	Is there no supply of water?	Make sure that the H-Adapter Cover, PET bottle and P-Adapter Cover is well connected each other.
	Is there no supply of raw material drink?	Make sure that the silicon tube connected to the H-Adapter Cover is installed.
		Make sure the tray is well fixed.
Is there any noise or weird sound?	Is the product installed horizontally?	Keep the product horizontal.
	Aren't there other items on the product?	Please remove other items on the product.
Is the ice quality bad?	Did you check the sugar content of the raw material drink?	If the raw material drink are high in sugar, the speed (drum rotation) should be adjusted to a low speed.
	Did you check the speed of the drum?	
	Did you check the drum temperature?	If the drum temperature is not cold, there may be no refrigerant gas, so request A/S.
Is there a flood of raw material drink in the tray?	Isn't the product tilted?	Please use the product in a flat place. Make sure that the tray is well fixed.

Warranty

Product Name :

Snowflake-Ice machine

Model : SNOWCOOK LA ,SA

Customer Name :

Tel. :

Address :

Lot No. :

Date of Purchase :

Sales Agent Name :

Tel. : +82-32-345-7733

Address : 45, Gyeonginyet-ro
38beon-gil, Bucheon-si, Gyeonggi-do,
14694, Republic of Korea

1. This product has passed the comprehensive inspection after strict quality control at the time of release.
2. You may receive free A/S at the service center for troubles within the warranty period (one year after purchase). However, for paid A/S service, the customer must pay the service fee even within the warranty period.
3. If the product has trouble, contact the A/S center.
4. Please present this Warranty document for repairs.
5. This warranty document will not be reissued, so please keep it for yourself.
6. Make sure to record the details on this warranty after you purchase the product.

WARRANTY CONTENT

1. This product shall be provided free of charge if there is any defect in manufacturing or if there is any trouble in normal operating conditions within the warranty period;
2. You will be billed for actual expenses required for repair even during the warranty period in any of the following cases:
 - A. Trouble due to the user's fault or carelessness
 - B. Trouble caused by natural disasters such as fire and flood
 - C. Trouble due to repair or modification of the product not through the sales agent or A/S center you purchased.
 - D. If this document (warranty) for the product is lost or there are no entries in the date of purchase and the sales agent.
3. Trouble after the warranty period will result in a paid A/S.

MANUFACTURER : KJ TECH



S N O W C O O K

A/S +82-32-345-7733

You can also apply for A/S to the Sales Agent.